

UN-HABITAT

World Urban-Forum III – Vancouver

Networking event

Public engagement: The inclusive approach

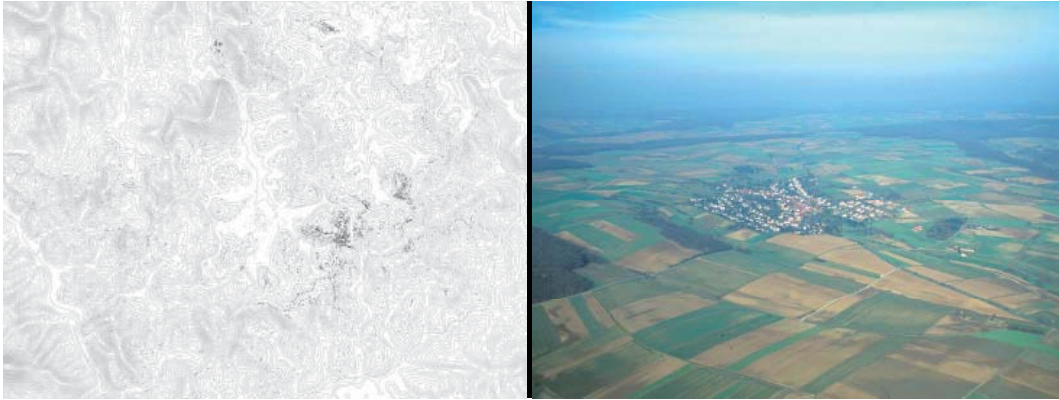
Habitat professionals Forum – June 22. 2006

Interdisciplinary approach in planning

Univ.-Prof. Matthias Reichenbach-Klinke, architect BDA,

Head of the European award association for rural development and village renewal, Vienna, Chair
of Rural Urbanism and Territorial Architecture, Faculty of Architecture,

TUM Technische Universität München.



Comparison – picture 1

The following comparison between Rwandan /Africa and Germany/Europe will demonstrate, that we are one world with similar or in special points with the same fields in urbanistic planning and participation – under the intention of the philosophy of inclusive approach and sustainable planning. The picture shows two very different situations, that we are in designing and researching.

Rwanda 8 Mio E - BRD 80 Mio E

Above the dispersed settlement in Rwanda/Africa on the right dense settlement clusters in Northern Bavaria, Germany.

Nyanza - The townscape of Nyanza is in the midst of Rwanda between Kigali – the capital and Butare – the main university of Rwanda.

The situation in a height of 1600 – 1800 m NN near the Equator is very good before the climate – we have two periods of agricultural harvest, wonderful temperatures and enough of rain.

The problem is the density of population. The district of Nyanza with 60.000 inhabitants is still increasing 2,5 % the year. The meaning is, the sensible system of ecological interdependences are in risk to destroy itself. Therefore our institute is asked, to develop strategies to improve the situation and to erect, stabilization for a future system.

500 E/qkm is the today level

90 % of the territory is under rural settlement.

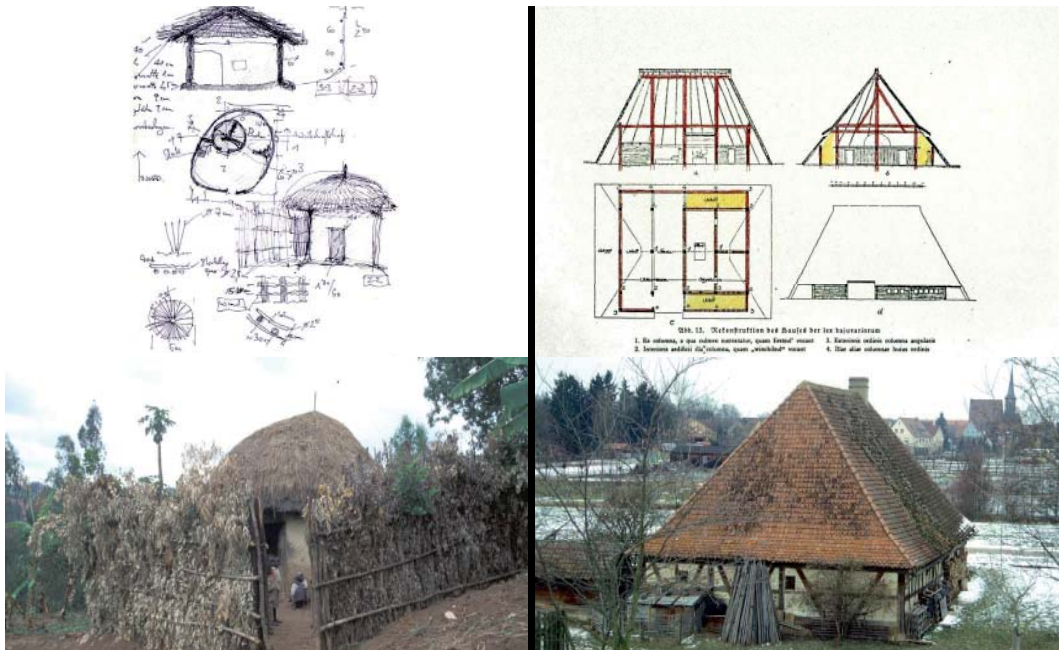
In the year 2015 we will have 700 and with year 2050 1000 inhabitants/qkm.

Nowadays there is existing a subsistence economy under alike urban agriculture conditions, because the ground of the average housing unit is about 600 qm – 1.600 qm square metres. These disperse settlement – like a garden city is interrupted by market-commercial-points. The idea also of the garden city is to produce the own food/groceries on the own ground – named subsistence economies.

The cultural landscape in Germany is defined by dense built settlement clusters. Out of these clusters the agriculture of the surrounding land is cultivated – the farms are inward the clusters. Nowadays only some great farms cultivated the surrounding landscape in the global economics concurrence. Therefore only some people are strong enough to resist against the economic rules of the global capitalism. Nowadays the inhabitants of the dense builded cluster settlements have less economic future. A social erosion is the consequence. Ca. 60 % of the buildings are in use – the rest is empty.

Therefore it is periculous, that the valued historical structure become divasted.

It is necessary to get a strategy for reactivation of this high-level-urbanistic-structure. It is necessary a strategy for reactivation of this high-level-urbanistic structure.



Researching the cultural and economic elements – picture 2

To get a true sustainable result, we have to discover the social cultural roots, to become a dialogue with the existing systems in the countries and regions and the future possibilities.

The element for living and small agriculture in Rwanda is a courtyard with palisade fence – in a height of ca. 3 meters. The courtyard is divided by a one-room-hut-named rugo-system, that itself is divided into three zones: the entrance – cooking and living - sleeping.

Small animals as chickens are welcome in the room.

The construction exist of thin timber sticks bounded by small branches and straw blades that finally is densed with clay. Clay is the ground and the wall surface – the roof is formed by a branch framework covered by straw and leafs of bananas.

All materials for building exist in the direct surrounding and will be recycled to the nature, if people leave the hut.

The system in the following steps from privacy to public zone is extraordinary differential linked: the inner area, the entrance – the threshold between inwards/outwards – the court for communication and employment – and the backside court for hygiene and intimate working. The entrance through the palisade from the public – to the half public defined by another threshold.

The cultural element in the midst of Europe is also a one room tent house, divided in areas for cattle – fire place and human beings room – named “Stube” since the time of 1200.

Before of the rough climate building is divided like a onion in temperature fields.

The construction are wooden beams in a ground scale of 3,6 m – a modular system.

Independent of this construction the walls are filled – sometimes with wooden boards or a weaved wooden system mixed with clay.

I think, that the some principles are valid:

- a sustainable construction
- a great experience in climate
- a fine system between privacy and public.

Therefore we can recognize some economic and social rules, that we have to respect in future solutions for the dwellings of poor social groups.



More density means more cultural difference – picture 3

In the time we get a cultural and economic difference between the functions of life.

The residential area is divided from the economic, agricultural zone.

Especially a small flat for the old people within the family is existing, the cattle house is separated from the store-hut or the barn.

But the sequence from private to public zones is evident in its visible consequence.

The construction system is further developed in a

Higher technical standard of the framework or the wall constructions.

The further step in the cultural developing is urbanised density.

But also here the courtyard maintain his importance as the social center : all functions remain their sequence from the private territory to the public zones.

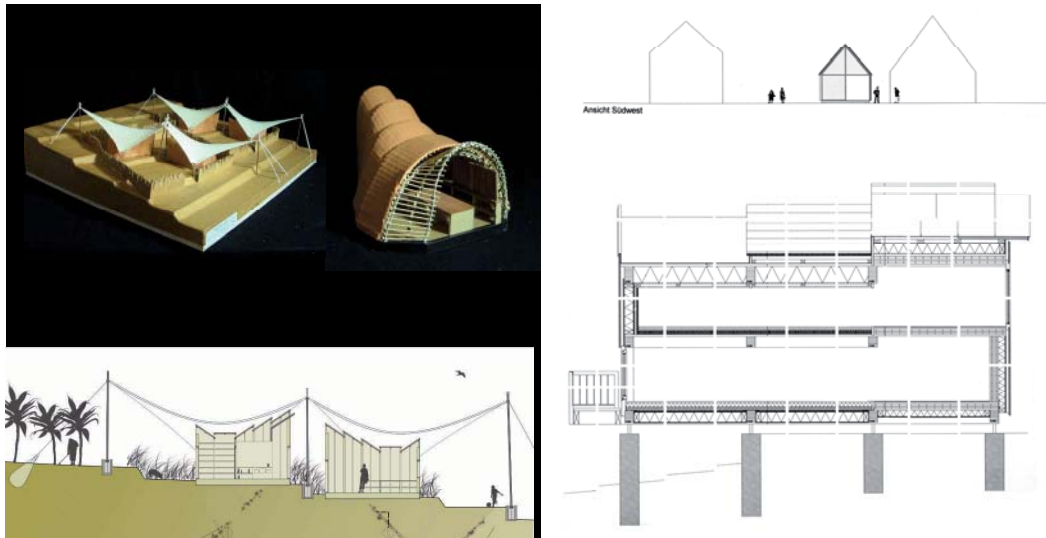


Vernacular housing with sustainable construction – picture 4

If we realize some rules for the future building we have to recognize the intelligence and sensibility of anonymous and vernacular architecture.

On the left bricks of clay and straw or brand framework covered with clay.

On the right a modular wooden framework filled with elements for the façade



Sustainable approaching in new technologies constructions – picture 5

You can see two conceptions of an constructive and architectural design, that depends on the aim of sustainable approaching.

On left you can recognize the traditional elements of house building in wooden framework with clay-covering.

The aim is to enrich the traditional qualitative with small high tech products, to get a link to the future

The new element is the overlaying membrane. This membrane is able

- to collect the raining water in a cavern
- to collect potable water by condensation on the surface of membrane – the condensation is existing by the different temperature levels in the wet climate, ~ 80% water in the air
- to improve the climatic by streaming conditions for the air between the house and the membrane
- the membrane protect the clay-covered building from erosion
- every unit exist of two house elements – one for residential, one for economy,
- the principle worth in stepping from privacy to public still exist
- the construction is cheap, can erected by the owner – the only new element is the light transparent membrane.

On the right the strategy organization for the European example is visible.

You have another climatic, other traditional handicrafts.

We will erect a model housing that exist from different constructive elements. It is usual, that you get as builder ready elements for roofing, facade, ground and so on. Here you can see how to get the elements for your own wishes in a rational combination.

It is a very cheap-housing: the elements are gathered from surrounding small fabrications and the builder is able to join the elements under the supervising/leadership of an architect himself.



Interdisciplinary approach – picture 6

All future solutions have to depend on sustainable and inclusive approaches. Therefore the ecological questions are in the foreground and in strongest importance. In Nyanza the most valued areas are these of the wet marshes in the valleys. It must be secured that any developments will be happen outwards of these areas. On the other side the subsistence economic settlement need great areas, to establish a future for the poorest people possible. The dense quarters on the hills may be for commercial, production, administration and residential flats.

This example offers the urbanistic strategy to build up few zones of ecological system:

- the area for natural self regulation system
- the cultivation area
- the area for development
- and
- the area for revitalization of destroyed areas

the principle values for sustainable approach require four action fields in the regional and urbanistic development.

- 1 agriculture, forest c., water using, energy system
- 2 custom and culture, learning and education, social situation of the society
- 3 residential houses and flats, private and public traffic, social health, infrastructure and communication
- 4 working and employment in production, agriculture, leisure, sport, commercial

But the core of every complicated system is the population.

We cannot set up a new concept, without asking the people to their existential necessities and their wishes for the future.

We have to discover the culture system of the settlements and the society in the same manner in Africa as in Europe

The one world system ask for the

interdisciplinary

sustainable

and

inclusive approaching

all over the world